



- TASTE THE DIFFERENCE -

MODEL SLX500

These slim line soft serve machines produce the best tasting gravity-fed frozen desserts...smooth, creamy and consistent yogurt, ice cream or sorbet! The 22" wide footprint allows for more units in a smaller space. The SLX500 is the perfect yogurt shop freezer and is great for adding flavors to ice cream shops, too! Great for QSRs, retirement villages and hospital cafeterias.

The Electro Freeze Advantage

- **Meets ADA Specifications** for self service applications
- **Innovative Solutions** providing the best product quality in the industry.
- **Precision dual Smart control monitors** temperature and Consistency to provide superior taste and quality.
- **Multi-function LED display** with manager smart tools.
- **Superior low temp refrigeration** system provides Best in class production and product quality
- **Compact design** with a small foot print.
- **Twist feature** will dispense two separate flavors or equal combinations of both.
- **Self-closing handles** eliminate waste
- **Patented auger** gently blends reducing agitation and maintaining product quality and consistency.
- **Durable polymer, long wearing nonreversible blades** offer lower maintenance costs and better product quality
- **Simple to operate and easy to clean**
- **Experience Tells** Electro Freeze has been manufacturing quality frozen treat machines since 1929. Superior engineering, product innovations, sturdy construction, quality craftsmanship and dependable performance are Electro Freeze hallmarks.
- **Superior Service Support** backed by a world-wide distributor network.

Soft Serve Freezer Genesis Series™

featuring



Virtual Quality
Management System™



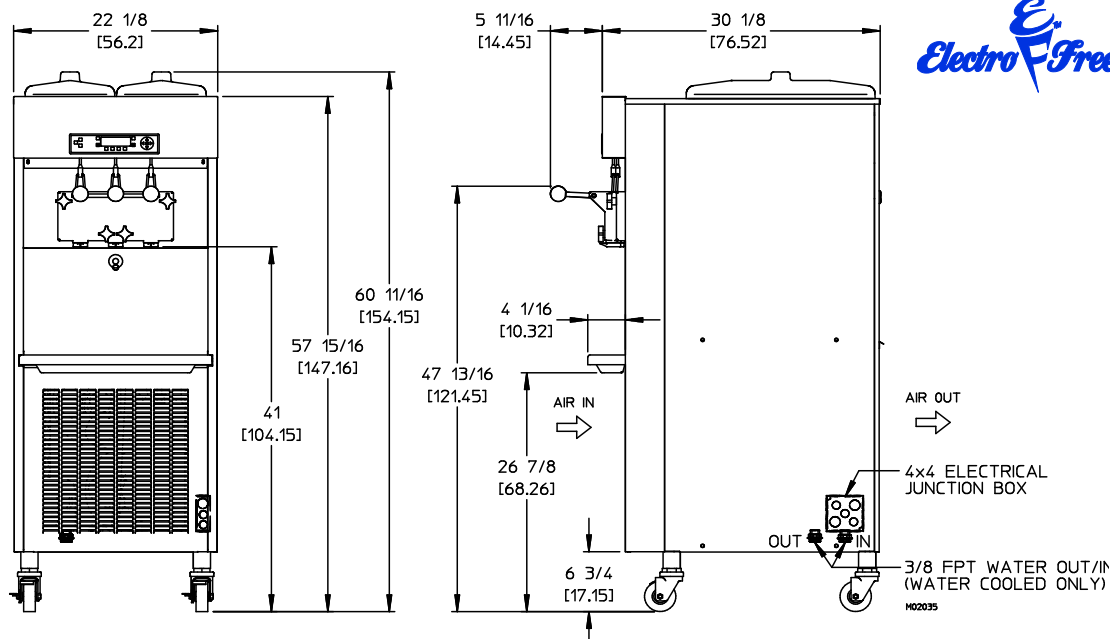
**Let VQM help manage your frozen
dessert business more effectively.**

electrofreeze.com

FOR MORE INFORMATION CONTACT

800-755-4545 • sales@electrofreeze.com

SLX500 Soft Serve Freezer



MODEL SLX500

Due to continual product improvements all specifications are subject to change without notice.

Weights	lbs.	kgs.	
Crated	568	257	
	cu.ft.	cu.m.	
Volume	58.42	1.65	
Dimensions	in.	cm.	
Width	22-1/8	56.20	
Depth	30-1/8	76.52	
Height	60-11/16	154.15	
Electrical SLX500	Maximum Fuse Size	Minimum Circuit Ampacity	Poles (P) Wires (W)
208-230/60/1 Air	40	30	2P 2W
208-230/60/1 Water	40	29	2P 2W
208-230/60/3 Water	25	20	3P 3W
208-230/60/3 Air	25	20	3P 3W

Electrical characteristics other than above available on request from factory or local distributor. Check nameplate for exact electrical data.

Bidding Spec

Electrical: Volt _____ Hz _____ Ph _____
Cooling: _____ Neutral _____ Yes _____ No
Options: _____

Electrical

One dedicated electrical connection is required. Manufactured to be permanently connected. See electrical chart for the proper requirement. Consult your local electrical codes for cord and receptacle specifications.

Beater Motor

Two, 2 hp.

Refrigeration Systems

One, 11,000 Btuh. R404a.
Separate Hopper Refrigeration, One, 500 Btuh, R134a.
Btuh may vary depending on compressor used.

Air and Water Cooled

6" (15.2 cm) air space required on front & rear panel for proper air circulation and be open on the top.

Mix Hopper Capacity: two - 16 quarts (15 liters) each

Freezing Cylinder Capacity: two - 3.7 quarts (3.5 liters) each

Certified and/or listed by:



*UL listed and listed by Underwriters Laboratories under Canadian National Standard C22.2 No. 120-M91 (R2008)



Electro Freeze div. of H.C. Duke & Son, LLC

2116-8th Avenue, East Moline, Illinois 61244

Phone (309) 755-4553 • (800) 755-4545

FAX (309) 755-9858

E-mail: sales@electrofreeze.com • www.electrofreeze.com

Authorized Distributor

LOVE'S THERMAL SYSTEMS, INC.

Wilkes-Barre / Harrisburg

800-564-8591

www.lovesthermal.com