

GES-5099

This pressurized, 2-flavor twist soft serve machine produces the highest quality, most consistent and profitable product you can serve. Ideal for operators that want to serve a high-quality product but don't require huge volume. This machine is perfect for co-branding concepts as well as college cafeterias, buffets and adding additional flavors to any shops.



Multi-function LED Display
 with manager smart tools.

Virtual Quality Management System™
 monitors Temperature and Consistency to
 provide superior taste and quality.

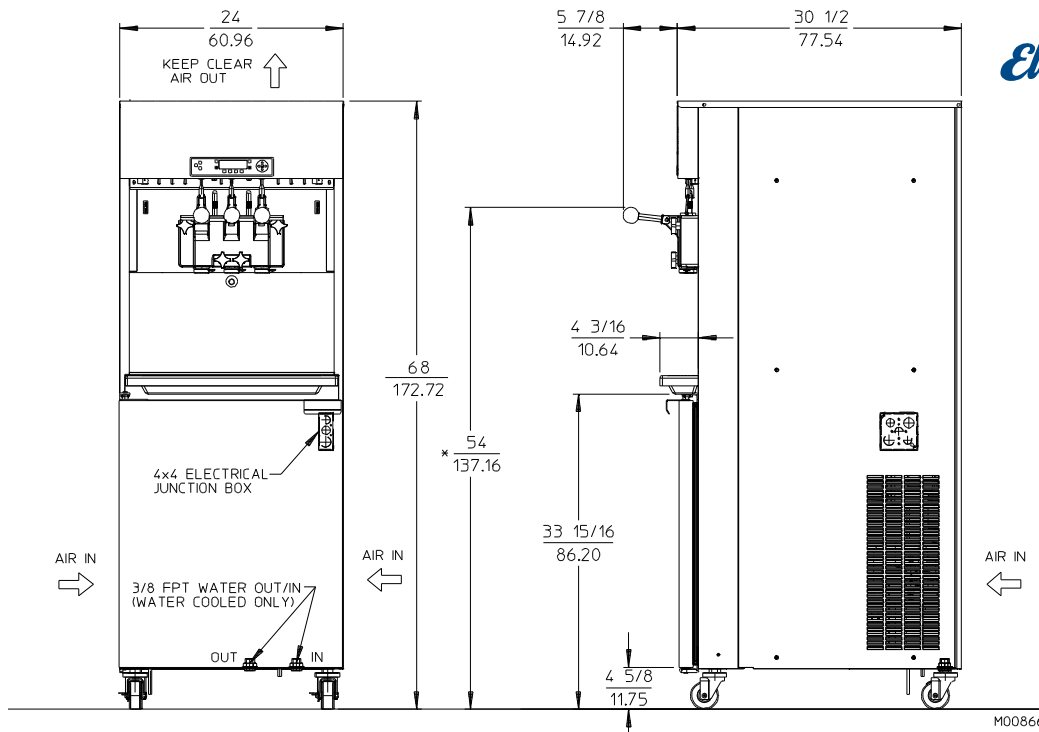
Pump Forward Design
 New pump forward design reduces
 maintenance and cleaning time.



Self Closing Spigots
 prevents the mess and
 eliminates waste.

**Scroll Compressor
 Technology**
 provides increased
 capacity, reliability and
 efficiency.

GES-5099 Soft Serve Freezer



MODEL GES-5099 SPECIFICATIONS

Due to continual product improvements all specifications are subject to change without notice.

Weights	lbs.	kgs.	
Net	653	296	
Crated	755	343	
	cu.ft.	cu.m.	
Volume	58.42	1.65	
Dimensions	in.	cm	
Width	24	60.96	
Depth	30-1/2	77.54	
Height	68	172.72	
Electrical	Maximum Fuse Size	Minimum Ampacity (Qty)	NEMA Plug Type
208-230/60/1 Air	45	38.0	2P, 2W
208-230/60/1 Water	45	36.5	2P, 2W
208-230/60/3 Air	30	28	3P, 3W
208-230/60/3 Water	30	26.5	3P, 3W
	Total Amps (Qty)	kW	Poles (P) Wires (W)
400/50/3 Air	14.7	6.1	3P 4W
400/50/3 Water	13.3	5.8	3P 4W

Electrical characteristics other than above available on request from factory or local distributor. Check nameplate for exact electrical data.

Bidding Spec

Electrical: Volt _____ Hz _____ Ph _____

Cooling: _____ Neutral _____ Yes _____ No

Options: _____

Electrical

A dedicated electrical connection is required. Manufactured to be permanently connected. See electrical chart for the proper requirement. Consult your local electrical codes for cord and receptacle specifications.

Beater Motor

Two, 2hp.

Refrigeration Systems

One, 12,000 Btuh. R404a.
Separate Cabinet Refrigeration, One, 1000 Btuh, R134a. Btuh may vary depending on compressor used.

Air Cooled

For proper air circulation, unit requires 6" (15.2 cm) air space at rear panel or 6" side clearance with 1" back and 29" top clearance.

Arrange installation & repair through established distributors.


Mix Capacity: two tanks - 20 quarts (18.93 liters) each

Freezing Cylinder Capacity: two - 3.7 quarts (3.5 liters) each

Certified and/or listed by:



*UL listed and listed by Underwriters Laboratories under Canadian National Standard C22.2 No. 120-13

 **Electro Freeze div. of H.C. Duke & Son, LLC**
2116-8th Avenue, East Moline, Illinois 61244 USA
Phone (309) 755-4553 • (800) 755-4545
FAX (309) 755-9858
E-mail: sales@electrofreeze.com • www.electrofreeze.com

Printed in U.S.A. ©2019 H.C. Duke & Son LLC / Electro Freeze 4/19

Authorized Distributor

LOVE'S THERMAL SYSTEMS, INC.
Wilkes-Barre / Harrisburg
800-564-8591
www.lovesthermal.com